



Access and Language Options



[Login/Register](#)



[Home](#)

[About Us](#)

[Places to Go](#)

[How to use DisabledGo](#)

[News and Blog](#)

[Site Map](#)

You Are Here: [Home](#) > [Places to Go](#) > Venue



## Holiday Inn Leeds - Garforth Leisure Facilities



Guide Last Updated: 25/10/2017



[Explain These Icons](#)

[Add To My Trip](#)

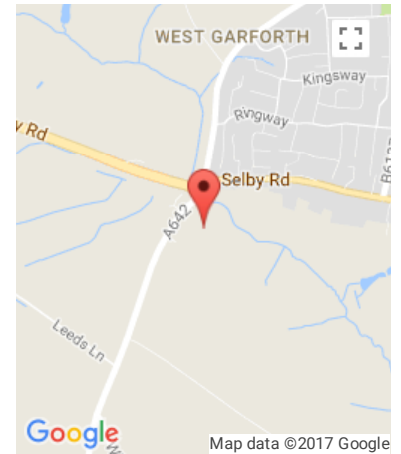
[View the Access Guide](#)

Wakefield Road, Garforth, LS25 1LH

0113 286 6556

<https://www.ihg.com/holidayinn/hotels/gb/en/leeds/leegf/hotel/detail>

[Something Changed? Click Here](#)



### Venue Reviews

Average Rating: ★★★★★

[Review this Venue](#)

## Access Guide

Leisure Facilities Introduction

Collapse -

Related Access Guide(s)

Collapse -

- [For the Holiday Inn Leeds - Garforth DisabledGo access guide please click here \(new tab\).](#)
- [For the Holiday Inn Leeds - Garforth Banqueting Suite DisabledGo access guide please click here \(new tab\).](#)

Leisure Facilities Information

Collapse -

- The leisure facilities are located to the rear left of the hotel.

Getting Here

Collapse -

By Road

Collapse -

- This hotel is located on the outskirts of Rotherham, just off Junction 46 of the M1. The hotel is located off the A63.
- This hotel has a car park which is free for all users.

[Cookie Policy](#)

## By Bus

Collapse -

- There is a bus stop within 150 metres of the hotel.
- The nearest bus stop is located on the A642 on the opposite side of the A63.
- [For more information on buses in Yorkshire please click here \(opens new tab\).](#)

## By Train

Collapse -

- The nearest Railway Station is Garforth.
- Garforth Station is situated to the north of Garforth, approximately 1.4 miles from the hotel. There are bus and taxi routes to the hotel from the station.
- [For more information on National Rail please click here \(opens new tab\).](#)

## Useful Links

Collapse -

- For information on additional buses in West Yorkshire please visit the First Group website.
- [To view the web page described above click here \(opens in new tab\).](#)
- For information on additional buses in West Yorkshire please visit the Square Peg Buses website.
- [To view the web page described above click here \(opens in new tab\).](#)

## Getting Help and Assistance

Collapse -

- There is a member of staff available for help and assistance.
- Staff receive disability awareness/equality training.
- Staff do not receive deaf awareness training.
- There is not a member of staff trained in British Sign Language.
- British Sign Language interpreters cannot be provided on request.
- The alternative formats documents can be provided in include; large print on request.
- There is an assistance dog toilet or toileting area at the venue/near by.
- The assistance dog toilet or toileting area is located on the grass areas surrounding the hotel.
- Water bowls for assistance dogs are available.
- There are not mobility aids available.

## Parking

Collapse -

## Parking

Collapse -

- The hotel does have its own parking facilities.
- The car park is located at the front of the hotel.
- The car park type is open air/surface.
- The car park does not have a height restriction barrier.
- The car park does have a barrier control system.
- Controls at the barrier are not within the range of 100cm to 110cm.
- The car park surface is tarmac.
- There is a/are Blue Badge parking bay(s) available.
- The Blue Badge bay(s) is/are clearly marked and signposted.

ated Blue Badge parking bay(s)


[Cookie Policy](#)

- The dimensions of the designated Blue Badge parking bay(s) surveyed are 384cm x 506cm (12ft 7in x 16ft 7in).
- There is not a 120cm hatched zone around the Blue Badge parking bay(s).
- The dimensions of other designated Blue Badge parking bay(s) vary in size.
- Parking spaces for Blue Badge holders do not need to be booked in advance.
- Clearly marked/signposted parent and child parking bays are not available.
- All parking spaces are provided on a first come first served basis.
- There are additional car parks for staff and visitors.
- The main car park has 3 Blue Badge bays. There is a car park to the left of the hotel facing the leisure facilities. The car park to the left has 1 Blue Badge bay. There is also a car park to the right of the hotel. The car park to the right has 1 Blue Badge bay.



Paying Collapse -

- There are not parking charges for the car park.

Access from the Car Park Collapse -

- The route from the car park to the entrance is accessible to a wheelchair user with assistance.
- Assistance may be required because there is/are dropped kerbs.
- The entrance is clearly visible from the car park.
- The surface on the approach to the entrance is concrete tiles and block paving.
- There is not a road to cross between the car park and the entrance.
- There is no tactile paving on dropped kerbs between the car park and the entrance.
- The nearest designated Blue Badge parking bay is approximately 22m (24yd 2in) from the hotel entrance.

Drop-off Point(s) Collapse -

- There is a/are clearly marked drop-off point(s).
- The drop-off points(s) is/are located in front of the hotel entrance.
- The route from the drop-off point(s) to the entrance is accessible to a wheelchair user with assistance.
- Assistance may be required because there is/are dropped kerbs.
- There is no tactile paving on dropped kerbs between the drop-off point(s) and the entrance.

Comments Collapse -

- The barrier to enter the car park will rise automatically.

[Cookie Policy](#) re entered.

- The exit code is supplied by reception staff when checking in.

Outside Access (Hotel Entrance)

Collapse -

Entrance

Collapse -

- This information is for the entrance located at the front of the hotel.
- The entrance area/door is clearly signed.
- There is ramped/sloped access at this entrance.
- There is a canopy or recess which provides weather protection at this entrance.
- The entrance door(s) does not/do not contrast visually with its immediate surroundings.
- The main door(s) open(s) automatically.
- The door(s) is/are double width.
- The width of the door opening is 137cm.
- There is a second set of doors.
- The door(s) open(s) automatically.
- The push pad or push button is 134cm from floor level.
- The door(s) is/are double width.
- The width of the door opening is 134cm.
- There is a member of staff available for assistance at this entrance.



Ramp/Slope

Collapse -

- The ramp/slope is located on the path leading to the entrance.
- The gradient of the slope is very easy.

Getting Around

Collapse -

Access

Collapse -

- There is step free access throughout the ground floor.



Circulation

Collapse -

- There are doors in corridors/walkways which have to be opened manually.
- The type of flooring in corridors/walkways is carpet, tiles and stone.
- There is some flooring in corridors/walkways which includes patterns or colours which could be confusing or look like steps or holes to some people.
- There is some flooring in corridors/walkways which is shiny and could cause issues with glare or look slippery to some people.



Cookie Policy

<ul style="list-style-type: none"> <li>• There is good colour contrast between the walls and floor in the majority of corridors/walkways.</li> <li>• There are seats with armrests on both sides at regular intervals.</li> <li>• The lighting levels are good.</li> <li>• Access to other floors/levels is via stairs.</li> </ul>	
<p>Signage</p> <p style="text-align: right;">Collapse -</p> <ul style="list-style-type: none"> <li>• Wayfinding signage is provided.</li> <li>• The colour, design and typeface of signs is consistent throughout the building.</li> </ul>	
<p>Audio</p> <p style="text-align: right;">Collapse -</p> <ul style="list-style-type: none"> <li>• This venue does play background music in public areas.</li> <li>• Music is played in the hotel lobby, restaurant and the standard toilets.</li> <li>• There is not a hearing assistance system in the public areas of the building.</li> </ul>	


Opening Times (Leisure Facilities)

Collapse -

- Monday 06:30 - 22:00.
- Tuesday 06:30 - 22:00.
- Wednesday 06:30 - 22:00.
- Thursday 06:30 - 22:00.
- Friday 06:30 - 22:00.
- Saturday 07:00 - 20:00.
- Sunday 07:00 - 20:00.

Outside Access (Leisure Facilities External Entrance)

Collapse -

<p>Entrance</p> <p style="text-align: right;">Collapse -</p> <ul style="list-style-type: none"> <li>• This information is for the entrance located at the left hand side of the main hotel.</li> <li>• The entrance area/door is clearly signed.</li> <li>• There is ramped/sloped access at this entrance.</li> <li>• There is not a canopy or recess which provides weather protection at this entrance.</li> <li>• The entrance door(s) does/do contrast visually with its immediate surroundings.</li> <li>• The main door(s) open(s) towards you (pull).</li> <li>• The door(s) is/are single width.</li> <li>• The door(s) is/are heavy.</li> <li>• The width of the door opening is 94cm.</li> </ul>	
<p>Ramp/Slope</p> <p style="text-align: right;">Collapse -</p> <p>Cookie Policy</p> <p>ated in front of the entrance.</p>	



- The gradient of the ramp/slope is steep.
- The ramp/slope is permanent.
- There is not a level landing at the top of the ramp/slope.
- There is not a/are not handrail(s) at the ramp.
- The width of the ramp/slope is 138cm (4ft 6in).

## Entrance (Leisure Facilities Internal Entrance)

Collapse -

## Entrance

Collapse -

- This information is for the entrance located on the ground floor, in the left hand corridor of the hotel.
- The entrance area/door is clearly signed.
- There is step free access at this entrance.
- The entrance door(s) does not/do not contrast visually with its immediate surroundings.
- The main door(s) open(s) away from you (push).
- The door(s) is/are single width.
- The door(s) is/are heavy.
- The width of the door opening is 82cm.



## Reception (Leisure Facilities)

Collapse -

## Reception

Collapse -

- The reception point is located to the right as you enter the leisure facilities internal entrance.
- The reception point is approximately 6m (6yd 1ft) from the leisure facilities internal entrance.
- The reception area/desk is clearly visible from the entrance.
- There is step free access to the reception point.
- There is a clear unobstructed route to the reception point.
- There are no windows, TVs, glazed screens or mirrors behind the reception point which could adversely affect the ability of someone to lip read.
- The reception counter is not placed in front of a background which is patterned.
- The lighting levels at the reception point are good.
- The height of the reception counter is high (110cm+).
- There is sufficient space to write or sign documents on the counter.
- There is not a lowered section of the counter.
- The counter is staffed.
- Clipboards can be provided to anyone who is unable to use the desk.
- There is not a hearing assistance system at the reception point.
- Signs and universally accepted symbols or pictograms, such as those for disabled access, WCs, circulation routes and other



<p>parts of the building are not provided in the reception area.</p> <ul style="list-style-type: none"> <li>The type of flooring in the reception area is tiles, stone and laminate.</li> </ul>	
Reception Waiting Area	Collapse -
<ul style="list-style-type: none"> <li>There is a waiting area close to the reception point.</li> <li>Access to the waiting area is unobstructed.</li> <li>There are seats with armrests on both sides.</li> <li>There is not sufficient space for a wheelchair user to use the waiting area.</li> </ul>	

Fitness Suite

Collapse -

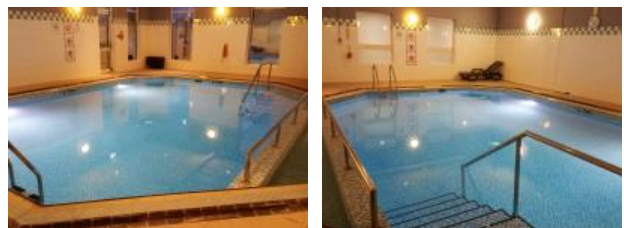
Access to Fitness Suite	Collapse -
<ul style="list-style-type: none"> <li>The fitness suite is located to the left as you enter the leisure facilities.</li> <li>The fitness suite is 7m (7yd 1ft) from the leisure facilities internal hotel entrance.</li> <li>There is level access to the fitness suite.</li> <li>There are doors into the fitness suite.</li> <li>The doors open away from you (push).</li> <li>The doors are single.</li> <li>The doors are heavy.</li> <li>The opening is 73cm (2ft 5in) wide.</li> </ul>	
Fitness Suite (General)	Collapse -
<ul style="list-style-type: none"> <li>Staff receive some training in assisting disabled people.</li> <li>Training provided is in house.</li> <li>Equipment suitable for mobility or sensory impaired users includes free weights, cable pulley machine, upper body machines, and a hand bike.</li> <li>A portable hearing loop is not available for induction.</li> <li>There is clear manoeuvring space between equipment.</li> <li>There is level access to all of the equipment.</li> </ul>	



Swimming Pool

Collapse -

- There is not level access from the changing area to the swimming pool.
- There is not a ramped entrance into the water.
- There is a wet side chair available.
- There is not a hoist for wheelchair users to access the water.
- There are steps into the swimming pool.
- There are 7 steps.
- There is a ladder type entrance into the water.



Cookie Policy :h sides of the ladder.



### Step(s) (Changing Area - Swimming Pool)

Collapse -

- There is a/are step(s) located leading from all changing rooms.
- The step(s) is/are used to access the swimming pool, sauna and poolside shower.
- There is/are 5 step(s).
- The step(s) is/are clearly marked.
- The height of the step(s) is/are not between 15cm and 18cm.
- The height of the step(s) is/are 19cm.
- The going of the step(s) is/are not between 30cm and 45cm.
- There is a/are handrail(s) at the step(s).
- The handrail(s) is/are on the left going up.
- Handrails are at the recommended height (90cm-100cm).
- Handrails do cover the flight of stairs throughout its length.
- Handrails are easy to grip.
- Handrails do not extend horizontally beyond the first and last steps.
- There is a second lower handrail.
- The lighting levels at the step(s) are good.



### Lift (Changing Area - Swimming Pool)

Collapse -

- There is a lift for public use.
- The lift is located leading from all changing rooms.
- Signs indicating the location of the lift are not available from the entrance.
- The lift is approximately 8m (8yd 2ft) from the leisure facilities internal hotel entrance.
- The lift is a platform lift.
- A member of staff needs to be notified for use of the lift.
- A member of staff is required to operate the lift.
- The platform lift accesses a small level change.
- There is not a clear level manoeuvring space of 150cm x 150cm in front of the lift.
- The external controls for the lift are not within 90cm - 110cm from the floor.
- The colour contrast between the external lift controls and the control plate is poor.
- The colour contrast between the external lift control plate and the wall is fair.
- The clear door width is 78cm (2ft 7in).
- The dimensions of the lift are 78cm x 93cm (2ft 7in x 3ft 1in).
- There are separate entry and exit doors in the lift.



[Cookie Policy](#) [visual floor indicator.](#)



- The lift does not have an audible announcer.
- The controls for the lift are within 90cm - 120cm from the floor.
- There is not a hearing loop system.
- The lift does not have Braille markings.
- The lift does not have tactile markings.
- The lighting levels in the lift are good.

Standard Shower (Poolside)

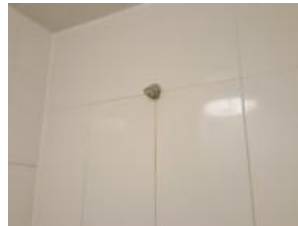
Collapse -

- Shower facilities are available.
- The shower(s) surveyed is/are located in the swimming pool area.
- There is not level access to the services from the shower facilities.

Comments

Collapse -

- There is a medium height step to access these shower facilities caused by the shower tray.



Changing Area (Male)

Collapse -

Changing Area

Collapse -

- There is a/are changing area(s) available.
- The changing area that was surveyed is located in the corridor to the right of reception.
- The changing area is approximately 15m from the leisure facilities internal hotel entrance.
- The changing area is approximately 9m from reception.
- The changing area is approximately 8m from the swimming pool.
- There is step free access to the changing area.
- The facilities available within the changing area include; an accessible changing room/cubicle, standard showers, standard toilets and baby change facilities.
- This is a male changing area.
- Similar female changing area(s) are available.
- The door(s) open(s) away from you (push).
- The door(s) is/are single width.
- The door(s) is/are heavy.
- The width of the door opening is 74cm.
- The type of flooring in the changing area is tiles.
- There is not a flashing fire alarm beacon within the changing area.
- There are changing benches or seats within the changing area.
- There are lockers within the changing area.
- There is a (one locker) within reach for a wheelchair user.

Cookie Policy

ispenser available.

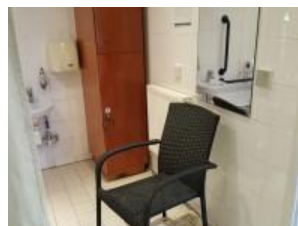


		<ul style="list-style-type: none"> <li>The lighting levels in the changing area are good.</li> </ul>
Shower Facilities	Collapse -	<ul style="list-style-type: none"> <li>Shower facilities are available.</li> <li>There is step free access to the shower facilities.</li> <li>Adjustable.</li> <li>The shower control type(s) is/are twist/turn.</li> <li>There is no seat for the shower(s).</li> <li>There is not a/are not wall-mounted grab rail(s) available for the shower(s).</li> </ul>
Toilet Facilities	Collapse -	<ul style="list-style-type: none"> <li>Toilet facilities are available.</li> <li>There is step free access to the toilet(s).</li> <li>An ambulant toilet with wall-mounted grab rails is not available.</li> <li>The wash basin(s) tap type is lever.</li> <li>The lighting levels in the toilet(s) are good.</li> </ul>
Baby Changing Facilities	Collapse -	<ul style="list-style-type: none"> <li>Baby changing facilities are available.</li> <li>Baby changing facilities are located in the accessible changing room(s)/cubicle(s).</li> <li>The baby change table is not set against the wall, permanently fixed at 75cm from the floor.</li> <li>The baby change table is not height adjustable.</li> <li>The height of the baby change table once extended is 90cm.</li> </ul>

### Accessible Changing Room

Collapse -

- There is an/are accessible changing room(s) available.
- The accessible changing room is located in the corridor to the right of reception.
- There is level access to the accessible changing room(s).
- The accessible changing room(s) is/are approximately 14m (15yd 11in) from the leisure facilities internal hotel entrance.
- The door opens inwards.
- The width of the door is 81cm (2ft 8in).
- The door is locked by a lever twist.
- The dimensions of the accessible changing room(s) are 347cm x 202cm (11ft 5in x 6ft 8in).
- There is a lateral transfer space.
- As you face the toilet pan the transfer space is on the left.
- The lateral transfer space is 275cm (9ft).
- There is a dropdown rail on the transfer side.
- There is a flush on the transfer side.



[Cookie Policy](#)

- The fixtures/facilities available in the accessible changing room(s) include; a chair/stool, handrails, a drop down rail, a toilet, a wash basin and a wheel in shower.
- Wall mounted rails are available.
- The toilet seat is 49cm (1ft 7in) above floor level.
- There is a sink.
- The sink can be reached from seated on the toilet.
- The height of the sink is 69cm (2ft 3in).
- The tap type is lever.
- Other fixtures/facilities available include; a hand dryer.
- There is a mixer tap.
- There is an emergency alarm in the cubicle.
- There is a mirror in the accessible changing room.
- The mirror is not placed at a lower level (60cm from the floor) or at an angle for ease of use.
- There is a locker within the accessible changing room.
- The locker is within reach for a wheelchair user.
- There is not a changing bench.
- There is a wheel in shower.
- The facilities available in the accessible changing room are a wheel in shower and handrails.
- The height of the seat is 51cm (1ft 8in).



**Who we are...**

- Homepage
- About Us
- Access Icons
- FAQs
- Contact Us
- Press and Media

**The way we work...**

- Website Conditions
- Acceptable Use Policy
- Cookie Policy
- Privacy Policy
- Accessibility Policy
- Common Access Guide Terms Explained

**Our support for business**

Disabled Charities and Useful Links  
 FAQs Around Our Surveyors

**Follow @DisabledGo**

**Join us...**

- Facebook
- Twitter
- Google+
- Switch to mobile site



eCommerce Solutions by PureNet