



Access and Language Options



Login/Register

[Home](#)

[About Us](#)

[Places to Go](#)

[How to use DisabledGo](#)

[News and Blog](#)

[Site Map](#)

You Are Here: [Home](#) > [Places to Go](#) > Venue



Holiday Inn Leeds - Garforth



Guide Last Updated: 25/10/2017

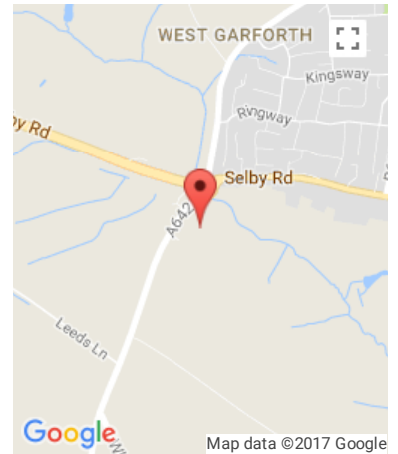


[Explain These Icons](#)

[Add To My Trip](#)

[View the Access Guide](#)

[Something Changed? Click Here](#)



Wakefield Road, Garforth, LS25 1LH

0113 286 6556

<https://www.ihg.com/holidayinn/hotels/gb/en/leeds/leegf/hoteldetail>

Venue Reviews

Average Rating: ★★★★★

[Review this Venue](#)

Access Guide

Hotel Introduction

Collapse -

Related Access Guide(s)

Collapse -

- [For the Holiday Inn Leeds - Garforth Banqueting Suite DisabledGo access guide please click here \(new tab\).](#)
- [For the Holiday Inn Leeds - Garforth Leisure Facilities DisabledGo access guide please click here \(new tab\).](#)

Hotel Information

Collapse -

- The hotel has its own parking facilities.
- This hotel has its own restaurant located on the ground floor.
- Conference/meeting facilities are available.
- The conference/meeting facilities are located on the ground and first floors.

Room Information

Collapse -

- The hotel has 144 rooms in total.
 - There is an/are accessible room(s) within the hotel.
 - The accessible room(s) is/are located on the ground floor.
- [Cookie Policy](#) sible room(s) with accessible ensuite facilities.

- There is/are 2 accessible room(s) with a wet room/wheel in shower.
- There is an/are adjoining room(s) available for the accessible room(s).
- The accessible rooms are 52m - 56m from the hotel entrance.
- There is a/are standard room(s) available on the ground floor.
- There is not an/are not adjoining room(s) available for the standard room(s).
- Rooms on other floors are accessed via stairs.

Auxiliary Aids

Collapse -

- Vibrating pillows with flashing beacons are available on request.
- Bed raisers are not available on request.
- Bath mats are available on request.
- All televisions have subtitles available.

Getting Here

Collapse -

By Road

Collapse -

- This hotel is located on the outskirts of Rotherham, just off Junction 46 of the M1. The hotel is located off the A63.
- This hotel has a car park which is free for all users.

By Bus

Collapse -

- There is a bus stop within 150 metres of the hotel.
- The nearest bus stop is located on the A642 on the opposite side of the A63.
- [For more information on buses in Yorkshire please click here \(opens new tab\).](#)

By Train

Collapse -

- The nearest Railway Station is Garforth.
- Garforth Station is situated to the north of Garforth, approximately 1.4 miles from the hotel. There are bus and taxi routes to the hotel from the station.
- [For more information on National Rail please click here \(opens new tab\).](#)

Useful Links

Collapse -

- For information on additional buses in West Yorkshire please visit the First Group website.
- [To view the web page described above click here \(opens in new tab\).](#)
- For information on additional buses in West Yorkshire please visit the Square Peg Buses website.
- [To view the web page described above click here \(opens in new tab\).](#)

Getting Help and Assistance

Collapse -

- There is a member of staff available for help and assistance.
- Staff receive disability awareness/equality training.
- Staff do not receive deaf awareness training.
- There is not a member of staff trained in British Sign Language.
- British Sign Language interpreters cannot be provided on request.

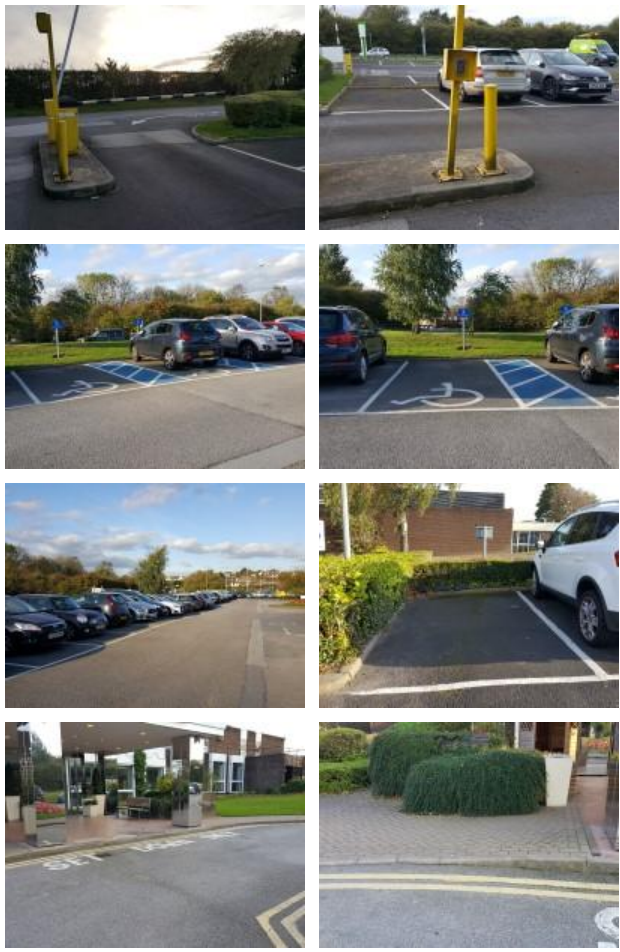
Cookie Policy

Documents can be provided in include; large print on request.

- There is an assistance dog toilet or toileting area at the venue/near by.
- The assistance dog toilet or toileting area is located on the grass areas surrounding the hotel.
- Water bowls for assistance dogs are available.
- There are not mobility aids available.

Parking

Collapse -

<p>Parking</p> <p style="text-align: right;">Collapse -</p> <ul style="list-style-type: none"> • The hotel does have its own parking facilities. • The car park is located at the front of the hotel. • The car park type is open air/surface. • The car park does not have a height restriction barrier. • The car park does have a barrier control system. • Controls at the barrier are not within the range of 100cm to 110cm. • The car park surface is tarmac. • There is a/are Blue Badge parking bay(s) available. • The Blue Badge bay(s) is/are clearly marked and signposted. • There is/are 5 designated Blue Badge parking bay(s) within the car park. • The dimensions of the designated Blue Badge parking bay(s) surveyed are 384cm x 506cm (12ft 7in x 16ft 7in). • There is not a 120cm hatched zone around the Blue Badge parking bay(s). • The dimensions of other designated Blue Badge parking bay(s) vary in size. • Parking spaces for Blue Badge holders do not need to be booked in advance. • Clearly marked/signposted parent and child parking bays are not available. • All parking spaces are provided on a first come first served basis. • There are additional car parks for staff and visitors. • The main car park has 3 Blue Badge bays. There is a car park to the left of the hotel facing the leisure facilities. The car park to the left has 1 Blue Badge bay. There is also a car park to the right of the hotel. The car park to the right has 1 Blue Badge bay. 	
<p>Paying</p> <p style="text-align: right;">Collapse -</p> <ul style="list-style-type: none"> • There are not parking charges for the car park. 	
<p>Access from the Car Park</p> <p style="text-align: right;">Collapse -</p> <ul style="list-style-type: none"> • The route from the car park to the entrance is accessible to a wheelchair user with assistance. • Assistance may be required because there is/are dropped kerbs. • The entrance is clearly visible from the car park. 	

[Cookie Policy](#)

- The surface on the approach to the entrance is concrete tiles and block paving.
- There is not a road to cross between the car park and the entrance.
- There is no tactile paving on dropped kerbs between the car park and the entrance.
- The nearest designated Blue Badge parking bay is approximately 22m (24yd 2in) from the hotel entrance.

Drop-off Point(s) Collapse -

- There is a/are clearly marked drop-off point(s).
- The drop-off points(s) is/are located in front of the hotel entrance.
- The route from the drop-off point(s) to the entrance is accessible to a wheelchair user with assistance.
- Assistance may be required because there is/are dropped kerbs.
- There is no tactile paving on dropped kerbs between the drop-off point(s) and the entrance.

Comments Collapse -

- The barrier to enter the car park will rise automatically.
- To exit a code has to be entered.
- The exit code is supplied by reception staff when checking in.

Outside Access (Hotel Entrance)

Collapse -

Entrance Collapse -

- This information is for the entrance located at the front of the hotel.
- The entrance area/door is clearly signed.
- There is ramped/sloped access at this entrance.
- There is a canopy or recess which provides weather protection at this entrance.
- The entrance door(s) does not/do not contrast visually with its immediate surroundings.
- The main door(s) open(s) automatically.
- The door(s) is/are double width.
- The width of the door opening is 137cm.
- There is a second set of doors.
- The door(s) open(s) automatically.
- The push pad or push button is 134cm from floor level.
- The door(s) is/are double width.
- The width of the door opening is 134cm.
- There is a member of staff available for assistance at this entrance.



Cookie Policy Collapse -

- The ramp/slope is located on the path leading to the entrance.
- The gradient of the slope is very easy.

Reception

Collapse -

Reception

Collapse -

- The reception point is located ahead as you enter the hotel.
- The reception point is approximately 7m (7yd 1ft) from the hotel entrance.
- The reception area/desk is clearly visible from the entrance.
- There is step free access to the reception point.
- There is a clear unobstructed route to the reception point.
- There are no windows, TVs, glazed screens or mirrors behind the reception point which could adversely affect the ability of someone to lip read.
- The reception counter is not placed in front of a background which is patterned.
- The lighting levels at the reception point are good.
- The height of the reception counter is high (110cm+).
- There is sufficient space to write or sign documents on the counter.
- There is a lowered section of the counter.
- The lowered section of the counter is at the recommended height of 76cm.
- There is sufficient space to write or sign documents on the lowered section of the counter.
- There is a clear knee recess beneath the lowered section of the counter.
- The clear knee recess does not have the recommended dimensions of 70cm (height) x 50cm (depth).
- The counter is staffed.
- Clipboards can be provided to anyone who is unable to use the desk.
- There is not a hearing assistance system at the reception point.
- Signs and universally accepted symbols or pictograms, indicating lifts, stairs, WCs, circulation routes and other parts of the building are provided in the reception area.
- The type of flooring in the reception area is carpet and stone.



Reception Waiting Area





Collapse -

- There is a waiting area close to the reception point.
- Access to the waiting area is unobstructed.
- There is a mixture of seating with and without armrests.
- There is sufficient space for a wheelchair user to use the

[Cookie Policy](#)

Getting Around

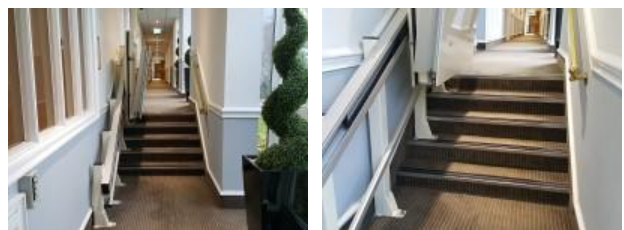
Collapse -

<p>Access</p> <p>Collapse -</p> <ul style="list-style-type: none"> • There is step free access throughout the ground floor. 	 
<p>Circulation</p> <p>Collapse -</p> <ul style="list-style-type: none"> • There are doors in corridors/walkways which have to be opened manually. • The type of flooring in corridors/walkways is carpet, tiles and stone. • There is some flooring in corridors/walkways which includes patterns or colours which could be confusing or look like steps or holes to some people. • There is some flooring in corridors/walkways which is shiny and could cause issues with glare or look slippery to some people. • There is good colour contrast between the walls and floor in the majority of corridors/walkways. • There are seats with armrests on both sides at regular intervals. • The lighting levels are good. • Access to other floors/levels is via stairs. 	 
<p>Signage</p> <p>Collapse -</p> <ul style="list-style-type: none"> • Wayfinding signage is provided. • The colour, design and typeface of signs is consistent throughout the building. 	
<p>Audio</p> <p>Collapse -</p> <ul style="list-style-type: none"> • This venue does play background music in public areas. • Music is played in the hotel lobby, restaurant and the standard toilets. • There is not a hearing assistance system in the public areas of the building. 	

Step(s) (Front Right Corridor)

Collapse -

- There is a/are step(s) located on the ground floor, at the front right of the hotel.
 - The step(s) is/are used to access These steps access some of the executives suites and conference rooms and the accessible toilets.
 - There is/are 5 step(s).
 - The step(s) is/are clearly marked.
 - The height of the step(s) is/are between 15cm and 18cm.
 - The going of the step(s) is/are not between 30cm and 45cm.
 - There is a handrail (on the right) at the step(s).
- [Cookie Policy](#) the right going up.



- Handrails are at the recommended height (90cm-100cm).
- Handrails do cover the flight of stairs throughout its length.
- Handrails are easy to grip.
- Handrails do not extend horizontally beyond the first and last steps.
- The lighting levels at the step(s) are good.

Comments

Collapse -

- These steps lead from the hotel to the Banqueting Suite area.

Lift (Front Right Corridor Platform Lift)

Collapse -

- There is a lift for public use.
- The lift is located on the ground floor, at the front right of the hotel.
- Signs indicating the location of the lift are not available from the entrance.
- The lift is approximately 10m (10yd 2ft) from the hotel entrance.
- The lift is a platform lift.
- A member of staff needs to be notified for use of the lift.
- A member of staff is required to operate the lift.
- The platform lift accesses a small level change.
- Clear signs indicating the facilities on each floor are not provided on lift lobby landings.
- There is not a clear level manoeuvring space of 150cm x 150cm in front of the lift.
- The external controls for the lift are not within 90cm - 110cm from the floor.
- The colour contrast between the external lift controls and the control plate is poor.
- The colour contrast between the external lift control plate and the wall is poor.
- The clear door width is 78cm (2ft 7in).
- The dimensions of the lift are 78cm x 95cm (2ft 7in x 3ft 1in).
- There are separate entry and exit doors in the lift.
- The lift does not have a visual floor indicator.
- The lift does not have an audible announcer.
- The controls for the lift are not within 90cm - 120cm from the floor.
- The lift controls are within 80cm - 92cm from the floor.
- There is not a hearing loop system.
- The lift does not have Braille markings.
- The lift does not have tactile markings.
- The lighting levels in the lift are good.
- There is a/are similar lift(s) available.



Comments

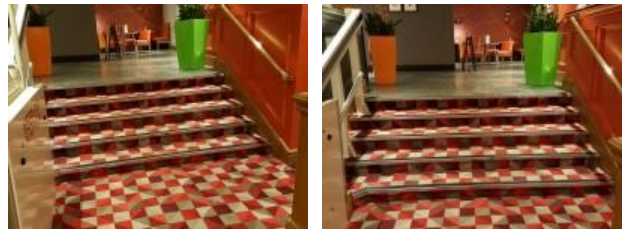
Expand +

Step(s) (Left Hand Corridor First Set of Steps)

Collapse -

[Cookie Policy](#)

- There is a/are step(s) located on the ground floor, in the corridor to the left of reception.
- The step(s) is/are used to access rooms and meeting rooms and the internal entrance to the leisure facilities.
- There is/are 5 step(s).
- The step(s) is/are clearly marked.
- The height of the step(s) is/are not between 15cm and 18cm.
- The height of the step(s) is/are 14cm.
- The going of the step(s) is/are between 30cm and 45cm.
- There is a/are handrail(s) at the step(s).
- The handrail(s) is/are on the right going up.
- Handrails are at the recommended height (90cm-100cm).
- Handrails do cover the flight of stairs throughout its length.
- Handrails are easy to grip.
- Handrails do not extend horizontally beyond the first and last steps.
- The lighting levels at the step(s) are good.



Lift (Left Hand Corridor First Platform Lift)

Collapse -

- There is a lift for public use.
- The lift is located on the ground floor, in the corridor to the left of reception.
- Signs indicating the location of the lift are not available from the entrance.
- The lift is approximately 11m (12yd 1in) from the hotel entrance.
- The lift is a platform lift.
- A member of staff needs to be notified for use of the lift.
- A member of staff is required to operate the lift.
- The platform lift accesses a small level change.
- Clear signs indicating the facilities on each floor are provided on lift lobby landings.
- There is a clear level manoeuvring space of 150cm x 150cm in front of the lift.
- The external controls for the lift are within 90cm - 110cm from the floor.
- The colour contrast between the external lift controls and the control plate is poor.
- The colour contrast between the external lift control plate and the wall is good.
- The clear door width is 78cm (2ft 7in).
- The dimensions of the lift are 78cm x 93cm (2ft 7in x 3ft 1in).
- There are separate entry and exit doors in the lift.
- The lift does not have a visual floor indicator.
- The lift does not have an audible announcer.
- The controls for the lift are within 90cm - 120cm from the floor.
- There is not a hearing loop system.
- The lift does not have Braille markings.
- The lift does not have tactile markings.
- The lighting levels in the lift are good.



Step(s) (Left Hand Corridor Second Set of Steps)

Collapse -

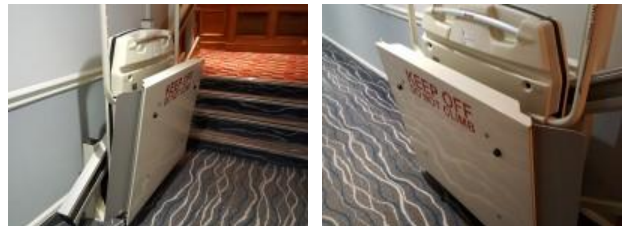
- There is a/are step(s) located on the ground floor, in the left hand corridor.
- The step(s) is/are used to access rooms, meeting rooms and the internal entrance to the leisure facilities.
- There is/are 4 step(s).
- The step(s) is/are clearly marked.
- The height of the step(s) is/are between 15cm and 18cm.
- The going of the step(s) is/are not between 30cm and 45cm.
- There is a/are handrail(s) at the step(s).
- The handrail(s) is/are on the right going up.
- Handrails are at the recommended height (90cm-100cm).
- Handrails do cover the flight of stairs throughout its length.
- Handrails are easy to grip.
- Handrails do not extend horizontally beyond the first and last steps.
- The lighting levels at the step(s) are good.



Lift (Left Hand Corridor Second Platform Lift)

Collapse -

- There is a lift for public use.
- The lift is located on the ground floor, in the left hand corridor.
- Signs indicating the location of the lift are not available from the entrance.
- The lift is approximately 16m (17yd 1ft) from the hotel entrance.
- The lift is a platform lift.
- A member of staff needs to be notified for use of the lift.
- A member of staff is required to operate the lift.
- The platform lift accesses a small level change.
- Clear signs indicating the facilities on each floor are provided on lift lobby landings.
- There is a clear level manoeuvring space of 150cm x 150cm in front of the lift.
- The external controls for the lift are within 90cm - 110cm from the floor.
- The colour contrast between the external lift controls and the control plate is poor.
- The colour contrast between the external lift control plate and the wall is good.
- The clear door width is 79cm (2ft 7in).
- The dimensions of the lift are 79cm x 93cm (2ft 7in x 3ft 1in).
- There are separate entry and exit doors in the lift.
- The lift does not have a visual floor indicator.
- The lift does not have an audible announcer.
- The controls for the lift are within 90cm - 120cm from the floor.
- There is not a hearing loop system.
- The lift does not have Braille markings.
- The lift does not have tactile markings.
- The lighting levels at the lift are good.



Step(s) (Left Hand Corridor Third Set of Steps)

Collapse -

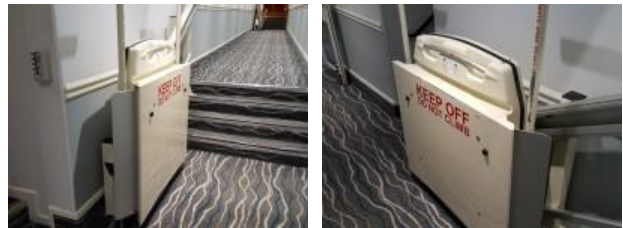
- There is a/are step(s) located on the ground floor, in the centre of the left hand corridor.
- The step(s) is/are used to access rooms, meeting rooms and the internal entrance to the leisure facilities.
- There is/are 4 step(s).
- The step(s) is/are clearly marked.
- The height of the step(s) is/are between 15cm and 18cm.
- The going of the step(s) is/are not between 30cm and 45cm.
- There is a/are handrail(s) at the step(s).
- The handrail(s) is/are on the right going up.
- Handrails are at the recommended height (90cm-100cm).
- Handrails do cover the flight of stairs throughout its length.
- Handrails are easy to grip.
- Handrails do not extend horizontally beyond the first and last steps.
- The lighting levels at the step(s) are good.



Lift (Left Hand Corridor Third Platform Lift)

Collapse -

- The lift is located on the ground floor, in the centre of the left hand corridor.
- Signs indicating the location of the lift are not available from the entrance.
- The lift is approximately 25m (27yd 1ft) from the hotel entrance.
- The lift is a platform lift.
- A member of staff needs to be notified for use of the lift.
- A member of staff is required to operate the lift.
- The platform lift accesses a small level change.
- Clear signs indicating the facilities on each floor are provided on lift lobby landings.
- There is not a clear level manoeuvring space of 150cm x 150cm in front of the lift.
- The external controls for the lift are within 90cm - 110cm from the floor.
- The colour contrast between the external lift controls and the control plate is poor.
- The colour contrast between the external lift control plate and the wall is fair.
- The clear door width is 78cm (2ft 7in).
- The dimensions of the lift are 78cm x 93cm (2ft 7in x 3ft 1in).
- There are separate entry and exit doors in the lift.
- The lift does not have a visual floor indicator.
- The lift does not have an audible announcer.
- The controls for the lift are within 90cm - 120cm from the floor.
- There is not a hearing loop system.
- The lift does not have Braille markings.
- The lift does not have tactile markings.



- There is a/are similar lift(s) available.

Eating and Drinking (Open Lobby)

Collapse -

- The following information is for the restaurant/bar.
- The restaurant/bar is located ahead as you enter the hotel.
- There is step free access to the restaurant/bar.
- Full table service is available.
- There is not a hearing assistance system.
- There is step free access within the restaurant/bar.
- There is ample room for a wheelchair user to manoeuvre.
- This area does play background music.
- The type of flooring in this area is carpet, tiles and wood.
- No tables are permanently fixed.
- Some chairs are permanently fixed.
- Some chairs have armrests on both sides.
- The nearest table is approximately 3m from the entrance/opening.
- The nearest table is approximately 3m from the till/counter.
- The distance between the floor and the lowest table is 37cm.
- The distance between the floor and the highest table is 101cm.
- The standard height for tables is 68cm.
- Plastic/takeaway cups are available.
- Plastic/takeaway cutlery is not available.
- Drinking straws are available.
- There are hand held menus, menu boards/signs and wall menus available.
- Menus are not available in Braille.
- Menus are not available in large print.
- Picture menus are not available.
- Menus are clearly written.
- Menus are presented in contrasting colours.
- The type of food served here is hot and cold meals and snacks.
- The lighting levels are good.



Accessible Room(s) (Rooms 013 and 016)

Collapse -

Accessible Room Information

Collapse -

- The details in this section relates to the accessible room(s) with a wet room/wheel in shower.
- This type of accessible room is located on the ground floor.
- There is step free access to this type of accessible room.
- All accessible rooms of this type have identical specifications.
- The ensuite transfer space for the accessible rooms varies from left to right.
- Guests do not need to open a door between the entrance and the room(s).

[Cookie Policy](#)



- The narrowest width of the corridor leading to the room surveyed was 128cm.



Bedroom Features Collapse -

- The accessible room surveyed is located on the ground floor, towards the rear left of the hotel.
- The accessible room surveyed at the time of the visit was Room 013.
- There is step free access to the accessible room surveyed, via lift.
- There is numbered signage on or near the accessible room door.
- The door is key card activated.
- The fob/card reader height is 107cm.
- The width of the door is 83cm (2ft 9in).
- There are lowered spy holes available.
- The bed type is double.
- The bed height is not adjustable.
- The height of the bed is 58cm (1ft 11in).
- The measurement between the bed base and floor is 17cm (7in).
- The bed is not moveable.
- The room does not have an unobstructed minimum turning space of 150cm x 150cm next to the bed.
- The height of the desk is 76cm.
- The desk is not height adjustable.
- The desk knee recess has the recommended dimensions of 70cm (height) x 50cm (depth).
- The room surveyed had a height adjustable chair with armrests.
- Wardrobes have been adapted to allow use from a seated position.
- Light switches are between 75cm and 120cm (4ft) from floor level.
- Electric sockets are not between 40cm and 100cm (4ft) from floor level.
- The window control type(s) for the room is a/are standard lever(s).
- There is an emergency alarm in the room.
- The emergency alarm is a push button.
- The emergency alarm rings to reception.
- There is not a flashing fire alarm beacon within the room.
- The type of flooring is carpet.

Ensuite Facilities Collapse -

- The ensuite door opens outwards.
- The door weight is heavy.
- The door is locked by a twist lock.
- The width of the door to the ensuite is 86cm (2ft 10in).

[Cookie Policy](#)

ensuite are 133cm x 165cm (4ft 4in x

- The ensuite does not have an unobstructed minimum turning space of 150cm x 150cm in front of the toilet seat.
- The ensuite has not got a non slip floor.
- There is an emergency alarm within the ensuite.
- The emergency pull cord alarm is out of reach (higher than 10cm (4") from floor).
- The emergency alarm rings to reception.
- There is not a flashing fire alarm beacon within the ensuite.
- Disposal facilities are available.
- There is a/are pedal waste paper bin disposal units.
- There is a mirror.
- The mirror is not placed at a lower level or at an angle for ease of use.
- There is a shelf immediately next to or behind the toilet.
- The shelf is not between 90cm and 100cm.
- There is a wash basin.
- The wash basin can be reached from seated on the toilet.
- The wash basin is placed higher than 74cm (2ft 5in).
- The height of the wash basin is 76cm.
- There is a vertical wall-mounted grab rail on the left hand side of the wash basin.
- The tap type is lever.
- There is a mixer tap.
- There is not a soap dispenser.

Toilet Details

Collapse -

- The height of the toilet seat above floor level is 50cm (1ft 8in).
- The toilet does not have a backrest or a cistern.
- There is a lateral transfer space.
- As you face the toilet pan the transfer space is on the left.
- The lateral transfer space is 74cm (2ft 5in).
- There is a flush on the transfer side.
- There is a spatula type lever flush.
- There is a dropdown rail on the transfer side.
- There is a/are wall-mounted grab rail(s) available.
- As you face the toilet, the wall mounted grab rails are on both sides.
- There is a vertical wall-mounted grab rail on the transfer side.
- There is a horizontal wall-mounted grab rail on the opposite side of the seat to the transfer space.
- There is a toilet roll holder.
- The toilet roll holder can be reached from seated on the toilet.
- The toilet roll holder is not placed higher than 100cm (3ft 3in).

Collapse -

- The ensuite has a wheel in shower.
- The shower cubicle is accessed via a steep slope.
- The shower head is height adjustable.
- The shower control type is twist/turn.
- There is a flip down/tip up seat for the shower.
- The height of the flip down/tip up or fixed seat is 49cm (1ft 7in).
- There is a/are wall-mounted grab rail(s) available for the shower.
- Horizontal and/or dropdown rails are available on both sides of the shower seat.
- There is a single vertical grab rail to assist standing users.

Colour Contrast and Lighting

Collapse -

- The colour contrast between the external hotel room door and wall is good.
- The colour contrast between the internal hotel room door and wall is good.
- The colour contrast between the hotel room walls and floor is good.
- The colour contrast between the external ensuite door and wall is good.
- The colour contrast between the internal ensuite door and wall is good.
- The colour contrast between the ensuite walls and floor is poor.
- The colour contrast between the drop down rail(s) and wall is poor.
- The colour contrast between the wall-mounted grab rail(s) and wall is poor.
- The toilet seat colour contrast is poor.
- The lighting levels in the room are low.
- The lighting levels in the ensuite are good.

Standard Room(s) (Room 73)

Collapse -

Bedroom Features

Collapse -

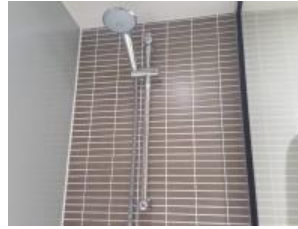
- The room surveyed is located on the first floor.
- The room surveyed at the time of the visit was Room 73.
- There is stepped access to the room surveyed.
- There is numbered signage on or near the room door.
- The width of the door is 73cm (2ft 5in).
- The bed type is double.
- The height of the bed is 60cm (1ft 12in).
- The measurement between the bed base and floor is 12cm (5in).
- Light switches are not within 120cm (3ft 11in) from floor level.

— [Fire alarm](#) in the room.

[Cookie Policy](#)



- There is not a flashing fire alarm beacon within the room.
- The type of facilities within the ensuite include; a toilet, a wash basin and a shower.
- The ensuite door opens inwards.
- The width of the door to the ensuite is 61cm (2ft).
- There is not an emergency alarm within the ensuite.
- There is not a flashing fire alarm beacon within the ensuite.
- The tap type is lever.
- There is a mixer tap.



Colour Contrast and Lighting

Collapse -

- The colour contrast between the external hotel room door and wall is good.
- The colour contrast between the internal hotel room door and wall is good.
- The colour contrast between the hotel room walls and floor is good.
- The colour contrast between the external ensuite door and wall is poor.
- The colour contrast between the internal ensuite door and wall is poor.
- The colour contrast between the walls and floor in the ensuite is fair.
- The lighting levels in the room are low.
- The lighting levels in the ensuite are good.

Comments

Collapse -

- There is a deep step to access the shower, created by the shower tray.

Other Floors (Ground Floor)

Collapse -

Stairs

Collapse -

- Stairs can be used to access other floors.
- The stairs are for public use.
- The stairs are located half way along the rear left hand corridor of the hotel.
- The stairs are approximately 38m from the hotel entrance.
- Signs indicating the location of the stairs are not available from the entrance.
- There are manual, heavy, single doors to enter and exit the stairwell on the ground floor.
- The floors which are accessible by stairs are G and 1.
- There are 15 steps between floors.
- The height of the step(s) is/are between the recommended 15cm and 18cm.



- The going of the step(s) is/are not between the recommended 30cm and 45cm.
- The steps are clearly marked.
- There is a/are handrail(s) at the step(s).
- The steps have a handrail on the right going up.
- Handrails are at the recommended height (90cm-100cm).
- Handrails do cover the flight of stairs throughout its length.
- Handrails are easy to grip.
- Handrails do not extend horizontally beyond the first and last steps.
- There is a landing.
- Clear signs indicating the facilities on each floor are provided on landings.
- The lighting levels at the steps are good.

Other Information

Collapse -

- The service(s) on the floors which are not accessible is/are Rooms 51 - 88, Rooms 102 - 141, Rooms 158 - 188, meeting rooms 4 - 7, the Ledsham Suite and the Aberford Room.

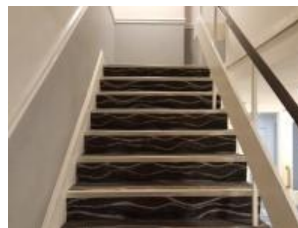
Other Floors (First Floor)

Collapse -

Stairs

Collapse -

- Stairs can be used to access other floors.
- The stairs are for public use.
- The stairs are located on the first floor, to the rear right of the hotel.
- The stairs are approximately 82m from the hotel entrance.
- Signs indicating the location of the stairs are not available from the entrance.
- There are manual, heavy, single doors to enter and exit the stairwell from the first floor upwards.
- The floors which are accessible by stairs are 1 and 2.
- There are 15 steps between floors.
- The height of the step(s) is/are between the recommended 15cm and 18cm.
- The going of the step(s) is/are not between the recommended 30cm and 45cm.
- The steps are clearly marked.
- There is a/are handrail(s) at the step(s).
- The steps have a handrail on the right going up.
- Handrails are at the recommended height (90cm-100cm).
- Handrails do cover the flight of stairs throughout its length.
- Handrails are easy to grip.
- Handrails do not extend horizontally beyond the first and



- There is a landing.
- Clear signs indicating the facilities on each floor are provided on landings.
- The lighting levels at the steps are good.

Other Information

Collapse -

- The service(s) on the floors which are not accessible is/are Rooms 158 - 188, meeting rooms 4 - 7, the Ledsham Suite and the Aberford Room.

Accessible Toilet(s) (Front Right Corridor)

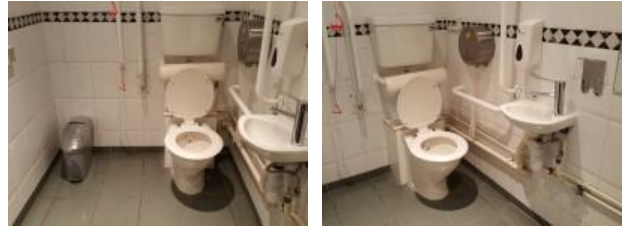
Collapse -

- There is an/are accessible toilet(s) for public use.

Location and Access

Collapse -

- The accessible toilet surveyed is not for the sole use of disabled people.
- This accessible toilet is located in the front right hand corridor of the hotel, in the Banqueting Suite area.
- This accessible toilet is approximately 28m (30yd 1ft) from the hotel entrance.
- There is step free access to the accessible toilet, via lift.



Features and Dimensions

Collapse -

- This is a shared toilet.
- A key is not required for the accessible toilet.
- There is pictorial signage on or near the toilet door.
- The door opens outwards.
- The door is heavy.
- The door is locked by a lever twist.
- The width of the accessible toilet door is 83cm (2ft 9in).
- The dimensions of the accessible toilet are 147cm x 300cm (4ft 10in x 9ft 10in).
- The accessible toilet does not have an unobstructed minimum turning space of 150cm x 150cm.
- The toilet has not got a non slip floor.
- The height of the light switch/pull cord is 113cm from floor level.
- There is a lateral transfer space.
- As you face the toilet pan the transfer space is on the left.
- The lateral transfer space is 89cm (2ft 11in).
- There is a flush, however it is not on the transfer side.
- There is not a spatula type lever flush.
- There is a dropdown rail on the transfer side.
- There is an emergency alarm.
- The emergency pull cord alarm is not fully functional.
- The alarm was out of reach (higher than 10cm (4") from floor) when surveyed.

[Cookie Policy](#)

| fire alarm beacon within the toilet.

- Disposal facilities are available in the toilet.
- There is a/are female sanitary, general domestic waste and waste paper pedal bin disposal units.
- There is not a/are not coat hook(s).

Position of Fixtures

Collapse -

- There is a/are wall-mounted grab rail(s) available.
- As you face the toilet the wall-mounted grab rail(s) is/are on both sides.
- There is a vertical wall-mounted grab rail on the transfer side.
- There is a horizontal wall-mounted grab rail on the opposite side of the seat to the transfer space.
- There is a mirror.
- The mirror is not placed at a lower level or at an angle for ease of use.
- There is not a shelf next to the toilet.
- The toilet has a backrest and a cistern.
- The height of the toilet seat above floor level is 44cm (1ft 5in).
- There is a toilet roll holder.
- The toilet roll holder can be reached from seated on the toilet.
- The toilet roll holder is not placed higher than 100cm (3ft 3in).
- There is a wash basin.
- The wash basin can be reached from seated on the toilet.
- The wash basin is placed higher than 74cm (2ft 5in).
- The height of the wash basin is 79cm (2ft 7in).
- There is a vertical wall-mounted grab rail on the left hand side of the wash basin.
- The wash basin tap type is lever.
- There is a mixer tap.
- There is a soap dispenser.
- The soap dispenser can be reached from seated on the toilet.
- The height of the soap dispenser is 99cm.
- There is a towel dispenser.
- The towel dispenser cannot be reached from seated on the toilet.
- The towel dispenser is placed higher than 100cm (3ft 3in).
- The height of the towel dispenser is 115cm (3ft 9in).
- There is a hand dryer.
- The hand dryer cannot be reached from seated on the toilet.
- The hand dryer is placed higher than 100cm (3ft 3in).
- The height of the hand dryer is 112cm (3ft 8in).

Colour Contrast and Lighting

Collapse -

[Cookie Policy](#)

the external door and wall is good.

- The contrast between the internal door and wall is good.
- The contrast between the dropdown rail(s) and wall is poor.
- The contrast between the wall-mounted grab rail(s) and wall is poor.
- The toilet seat colour contrast is poor.
- The contrast between the walls and floor is good.
- The lighting levels are good.

Standard Toilet(s) (Front Right Corridor)

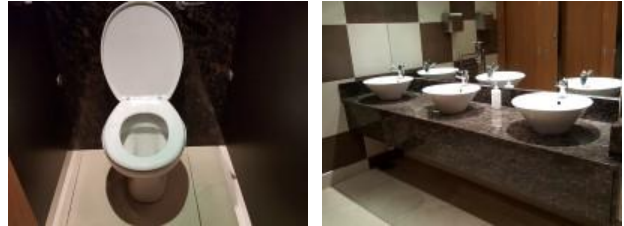
Collapse -

- Standard toilet facilities are available.

Access to Standard Female Toilet(s)

Collapse -

- The female toilet facilities that were surveyed are located in the front right hand corridor of the hotel, in the Banqueting Suite area.
- The female toilet(s) is/are approximately 19m (20yd 2ft) from the hotel entrance.
- There is step free access to the female toilet(s), via lift.
- There is pictorial signage on or near the toilet door.
- An ambulant toilet with wall-mounted grab rails is not available.
- The wash basin tap type is lever.
- There is not a flashing fire alarm beacon within the toilets.
- Lighting levels are good.
- There is a/are similar standard toilet(s) available.



Access to Standard Male Toilet(s)

Collapse -

- The male toilet facilities that were surveyed are located in the front right hand corridor of the hotel, in the Banqueting Suite area.
- The male toilet(s) is/are approximately 26m (28yd 1ft) from the hotel entrance.
- There is step free access to the male toilet(s), via lift.
- There is pictorial signage on or near the toilet door.
- An ambulant toilet with wall-mounted grab rails is not available.
- The wash basin tap type is lever.
- There is not a flashing fire alarm beacon within the toilets.
- Lighting levels are good.
- There is a/are similar standard toilet(s) available.

Standard Toilet(s) (Hotel Lobby Area)

Collapse -

- Standard toilet facilities are available.

Access to Standard Female and Male Toilet(s)

Collapse -

[Cookie Policy](#)

toilet facilities that were surveyed
ground floor, to the left of the reception

lobby and facing the Open Lobby.

- The female and male toilets are approximately 20m (21yd 2ft) from the hotel entrance.
- There is step free access to the female and male toilet(s), via lift.
- There is pictorial signage on or near the toilet door.
- An ambulant toilet with wall-mounted grab rails is not available.
- The wash basin tap type is lever.
- There is not a flashing fire alarm beacon within the toilets.
- Lighting levels are good.
- There is a/are similar standard toilet(s) available.



Baby Change Facilities

Collapse -

- Baby change facilities are located within the venue.
- Baby change facilities are located in the standard female and male toilets in the reception lobby area.
- There is step free access to the baby change facilities, via lift.
- The baby change table is not set against the wall, permanently fixed at 75cm from the floor.
- The baby change table is not height adjustable.
- The height of the baby change table once extended is 90cm (2ft 11in).

Who we are...

- Homepage
- About Us
- Access Icons
- FAQs
- Contact Us
- Press and Media

The way we work...

- Website Conditions
- Acceptable Use Policy
- Cookie Policy
- Privacy Policy
- Accessibility Policy
- Common Access Guide Terms Explained

Our support for business

- Disabled Charities and Useful Links
- FAQs Around Our Surveyors

Follow @DisabledGo

Join us...

- Facebook
- Twitter
- Google+
- Switch to mobile site

eCommerce Solutions by PureNet