



Access and Language Options



Login/Register

[Home](#)

[About Us](#)

[Places to Go](#)

[How to use DisabledGo](#)

[News and Blog](#)

[Site Map](#)

You Are Here: [Home](#) > [Places to Go](#) > Venue



Holiday Inn Leeds - Garforth Banqueting Suite



Guide Last Updated: 24/10/2017



[Explain These Icons](#)

[Add To My Trip](#)

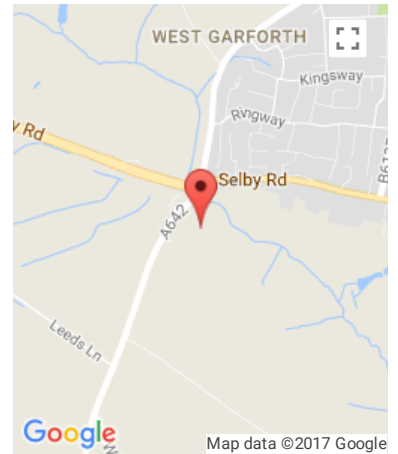
[View the Access Guide](#)

Wakefield Road, Garforth, LS25 1LH

0113 286 6556

<https://www.ihg.com/holidayinn/hotels/gb/en/leeds/leegf/hoteldetail>

[Something Changed? Click Here](#)



Venue Reviews

Average Rating: ★★★★★

[Review this Venue](#)

Access Guide

Conference Facilities Introduction (Banqueting Suite)

Collapse -

Related Access Guide(s)

Collapse -

- [For the Holiday Inn Leeds - Garforth DisabledGo access guide please click here \(new tab\).](#)
- [For the Holiday Inn Leeds - Garforth Leisure Facilities DisabledGo access guide please click here \(new tab\).](#)

Conference Facilities Information

Collapse -

- The conference facilities are located in the Banqueting Suite and on floors G, 1 and 2 of main hotel.

Getting Here

Collapse -

By Road

Collapse -

- This hotel is located on the outskirts of Rotherham, just off Junction 46 of the M1. The hotel is located off the A63.
- This hotel has a car park which is free for all users.

[Cookie Policy](#)

By Bus

Collapse -

- There is a bus stop within 150 metres of the hotel.
- The nearest bus stop is located on the A642 on the opposite side of the A63.
- [For more information on buses in Yorkshire please click here \(opens new tab\).](#)

By Train

Collapse -

- The nearest Railway Station is Garforth.
- Garforth Station is situated to the north of Garforth, approximately 1.4 miles from the hotel. There are bus and taxi routes to the hotel from the station.
- [For more information on National Rail please click here \(opens new tab\).](#)

Useful Links

Collapse -

- For information on additional buses in West Yorkshire please visit the First Group website.
- [To view the web page described above click here \(opens in new tab\).](#)
- For information on additional buses in West Yorkshire please visit the Square Peg Buses website.
- [To view the web page described above click here \(opens in new tab\).](#)

Getting Help and Assistance

Collapse -

- There is a member of staff available for help and assistance.
- Staff receive disability awareness/equality training.
- Staff do not receive deaf awareness training.
- There is not a member of staff trained in British Sign Language.
- British Sign Language interpreters cannot be provided on request.
- The alternative formats documents can be provided in include; large print on request.
- There is an assistance dog toilet or toileting area at the venue/near by.
- The assistance dog toilet or toileting area is located on the grass areas surrounding the hotel.
- Water bowls for assistance dogs are available.
- There are not mobility aids available.

Parking

Collapse -

Parking

Collapse -

- The hotel does have its own parking facilities.
- The car park is located at the front of the hotel.
- The car park type is open air/surface.
- The car park does not have a height restriction barrier.
- The car park does have a barrier control system.
- Controls at the barrier are not within the range of 100cm to 110cm.
- The car park surface is tarmac.
- There is a/are Blue Badge parking bay(s) available.
- The Blue Badge bay(s) is/are clearly marked and signposted.

ated Blue Badge parking bay(s)


[Cookie Policy](#)

- The dimensions of the designated Blue Badge parking bay(s) surveyed are 384cm x 506cm (12ft 7in x 16ft 7in).
- There is not a 120cm hatched zone around the Blue Badge parking bay(s).
- The dimensions of other designated Blue Badge parking bay(s) vary in size.
- Parking spaces for Blue Badge holders do not need to be booked in advance.
- Clearly marked/signposted parent and child parking bays are not available.
- All parking spaces are provided on a first come first served basis.
- There are additional car parks for staff and visitors.
- The main car park has 3 Blue Badge bays. There is a car park to the left of the hotel facing the leisure facilities. The car park to the left has 1 Blue Badge bay. There is also a car park to the right of the hotel. The car park to the right has 1 Blue Badge bay.



Paying Collapse -

- There are not parking charges for the car park.

Access from the Car Park Collapse -

- The route from the car park to the entrance is accessible to a wheelchair user with assistance.
- Assistance may be required because there is/are dropped kerbs.
- The entrance is clearly visible from the car park.
- The surface on the approach to the entrance is concrete tiles and block paving.
- There is not a road to cross between the car park and the entrance.
- There is no tactile paving on dropped kerbs between the car park and the entrance.
- The nearest designated Blue Badge parking bay is approximately 22m (24yd 2in) from the hotel entrance.

Drop-off Point(s) Collapse -

- There is a/are clearly marked drop-off point(s).
- The drop-off points(s) is/are located in front of the hotel entrance.
- The route from the drop-off point(s) to the entrance is accessible to a wheelchair user with assistance.
- Assistance may be required because there is/are dropped kerbs.
- There is no tactile paving on dropped kerbs between the drop-off point(s) and the entrance.

Comments Collapse -

- The barrier to enter the car park will rise automatically.

[Cookie Policy](#) e entered.

- The exit code is supplied by reception staff when checking in.

Outside Access (Banqueting Suite External Entrance)

Collapse -

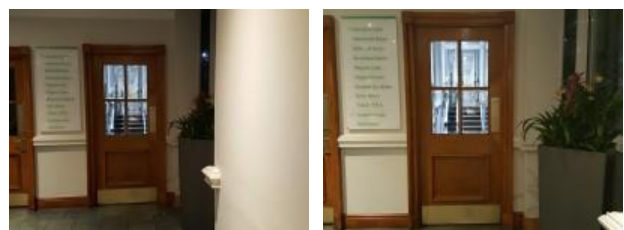
<p>Entrance Collapse -</p> <ul style="list-style-type: none"> • This information is for the entrance located at the front right of the hotel. • The entrance area/door is clearly signed. • There is ramped/sloped access at this entrance. • There is a canopy or recess which provides weather protection at this entrance. • The entrance door(s) does/do contrast visually with its immediate surroundings. • The main door(s) open(s) away from you (push). • The door(s) is/are double width. • The door(s) is/are heavy. • The width of the door opening is 148cm. • There is a second set of doors. • The door(s) open(s) towards you (pull). • The door(s) is/are double width. • The door(s) is/are heavy. • The width of the door opening is 142cm. • There is a member of staff available for assistance at this entrance.
<p>Ramp/Slope Collapse -</p> <ul style="list-style-type: none"> • The ramp/slope is located on the path leading to the entrance. • The gradient of the ramp/slope is slight.
<p>Comments Collapse -</p> <ul style="list-style-type: none"> • This entrance is normally kept locked and can only be used upon request. • Using this entrance avoids the front right corridor stairs and platform lift. • To use this entrance please see a member of staff on the main reception desk.



Entrance (Banqueting Suite Internal Entrance From Hotel)

Collapse -

<p>Entrance Collapse -</p> <ul style="list-style-type: none"> • This information is for the entrance located to the right as you enter the main hotel. • The entrance area/door is clearly signed. • There is step free access at this entrance. <p>Cookie Policy</p>



- The entrance door(s) does/do contrast visually with its immediate surroundings.
- The main door(s) open(s) away from you (push).
- The door(s) is/are single width.
- The door(s) is/are permanently held open.
- The width of the door opening is 78cm.

Comments

Collapse -

- This is the usual entrance to the Banqueting Suite.
- Using this entrance means having to use the front right corridor steps or platform lift.
- To avoid using the steps/platform lift please see a member of staff at the hotel main reception desk.
- A member of staff will then unlock the main Banqueting Suite entrance.

Reception

Collapse -

Reception

Collapse -

- The reception point is located ahead as you enter the hotel.
- The reception point is approximately 7m (7yd 1ft) from the hotel entrance.
- The reception area/desk is clearly visible from the entrance.
- There is step free access to the reception point.
- There is a clear unobstructed route to the reception point.
- There are no windows, TVs, glazed screens or mirrors behind the reception point which could adversely affect the ability of someone to lip read.
- The reception counter is not placed in front of a background which is patterned.
- The lighting levels at the reception point are good.
- The height of the reception counter is high (110cm+).
- There is sufficient space to write or sign documents on the counter.
- There is a lowered section of the counter.
- The lowered section of the counter is at the recommended height of 76cm.
- There is sufficient space to write or sign documents on the lowered section of the counter.
- There is a clear knee recess beneath the lowered section of the counter.
- The clear knee recess does not have the recommended dimensions of 70cm (height) x 50cm (depth).
- The counter is staffed.
- Clipboards can be provided to anyone who is unable to use the desk.
- There is not a hearing assistance system at the reception point

[Cookie Policy](#)


- Signs and universally accepted symbols or pictograms, indicating lifts, stairs, WCs, circulation routes and other parts of the building are provided in the reception area.
- The type of flooring in the reception area is carpet and stone.

Reception Waiting Area

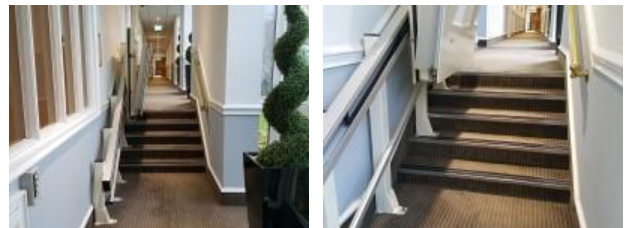
Collapse -

- There is a waiting area close to the reception point.
- Access to the waiting area is unobstructed.
- There is a mixture of seating with and without armrests.
- There is sufficient space for a wheelchair user to use the waiting area.

Step(s) (Front Right Corridor)

Collapse -

- There is a/are step(s) located on the ground floor, at the front right of the hotel.
- The step(s) is/are used to access These steps access some of the executives suites and conference rooms and the accessible toilets.
- There is/are 5 step(s).
- The step(s) is/are clearly marked.
- The height of the step(s) is/are between 15cm and 18cm.
- The going of the step(s) is/are not between 30cm and 45cm.
- There is a/are handrail(s) at the step(s).
- The handrail(s) is/are on the right going up.
- Handrails are at the recommended height (90cm-100cm).
- Handrails do cover the flight of stairs throughout its length.
- Handrails are easy to grip.
- Handrails do not extend horizontally beyond the first and last steps.
- The lighting levels at the step(s) are good.



Comments

Collapse -

- These steps lead from the hotel to the Banqueting Suite area.

Lift (Front Right Corridor Platform Lift)

Collapse -

- There is a lift for public use.
- The lift is located on the ground floor, at the front right of the hotel.
- Signs indicating the location of the lift are not available from the entrance.
- The lift is approximately 10m (10yd 2ft) from the hotel entrance.
- The lift is a platform lift.
- A member of staff needs to be notified for use of the lift.
- A member of staff is required to operate the lift.
- The platform lift accesses a small level change.



[Cookie Policy](#)

- Clear signs indicating the facilities on each floor are not provided on lift lobby landings.
- There is not a clear level manoeuvring space of 150cm x 150cm in front of the lift.
- The external controls for the lift are not within 90cm - 110cm from the floor.
- The colour contrast between the external lift controls and the control plate is poor.
- The colour contrast between the external lift control plate and the wall is poor.
- The clear door width is 78cm (2ft 7in).
- The dimensions of the lift are 78cm x 95cm (2ft 7in x 3ft 1in).
- There are separate entry and exit doors in the lift.
- The lift does not have a visual floor indicator.
- The lift does not have an audible announcer.
- The controls for the lift are not within 90cm - 120cm from the floor.
- The lift controls are within 80cm - 92cm from the floor.
- There is not a hearing loop system.
- The lift does not have Braille markings.
- The lift does not have tactile markings.
- The lighting levels in the lift are good.
- There is a/are similar lift(s) available.

Comments

Collapse -

- This platform lift leads to the Banqueting Suite from the main hotel.

Conference / Meeting Facilities (Magnet Suite)

Collapse -

- Conference/meeting facilities are available.
- The conference/meeting facilities are located on the ground floor of the banqueting suite.
- There is step free access to the conference/meeting facilities.
- The door opening width(s) is/are 75cm+ for the room(s).
- There is not a hearing assistance system for the room(s).
- There are no chairs with armrests on both sides within the room(s).
- There is sufficient space for a wheelchair user to manoeuvre within the room(s).
- The lighting levels in the room(s) are adjustable.



Comments

Collapse -

- The Magnet suite is located at the far left of the Banqueting Suite.
- There are other similar rooms in this area.
- There are also conference/meeting rooms on the ground, first and second floors of the main hotel.
- The conference/meeting rooms on the first and second floors of the hotel are not accessible to a wheelchair user.

[Cookie Policy](#)

Accessible Toilet(s) (Front Right Corridor)

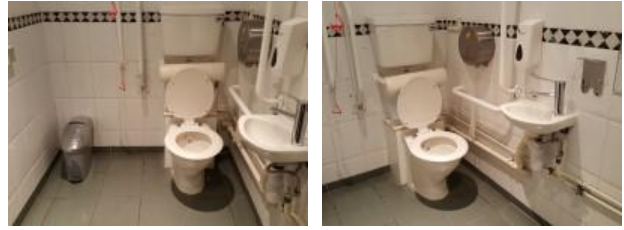
Collapse -

- There is an/are accessible toilet(s) for public use.

Location and Access

Collapse -

- The accessible toilet surveyed is not for the sole use of disabled people.
- This accessible toilet is located in the front right hand corridor of the hotel, in the Banqueting Suite area.
- This accessible toilet is approximately 28m (30yd 1ft) from the hotel entrance.
- There is step free access to the accessible toilet, via lift.



Features and Dimensions

Collapse -

- This is a shared toilet.
- A key is not required for the accessible toilet.
- There is pictorial signage on or near the toilet door.
- The door opens outwards.
- The door is heavy.
- The door is locked by a lever twist.
- The width of the accessible toilet door is 83cm (2ft 9in).
- The dimensions of the accessible toilet are 147cm x 300cm (4ft 10in x 9ft 10in).
- The accessible toilet does not have an unobstructed minimum turning space of 150cm x 150cm.
- The toilet has not got a non slip floor.
- The height of the light switch/pull cord is 113cm from floor level.
- There is a lateral transfer space.
- As you face the toilet pan the transfer space is on the left.
- The lateral transfer space is 89cm (2ft 11in).
- There is a flush, however it is not on the transfer side.
- There is not a spatula type lever flush.
- There is a dropdown rail on the transfer side.
- There is an emergency alarm.
- The emergency pull cord alarm is not fully functional.
- The alarm was out of reach (higher than 10cm (4") from floor) when surveyed.
- There is not a flashing fire alarm beacon within the toilet.
- Disposal facilities are available in the toilet.
- There is a/are female sanitary, general domestic waste and waste paper pedal bin disposal units.
- There is not a/are not coat hook(s).

Position of Fixtures

Collapse -

- There is a/are wall-mounted grab rail(s) available.
- As you face the toilet the wall-mounted grab rail(s) is/are on both sides.

[Cookie Policy](#)

L-mounted grab rail on the transfer

- There is a horizontal wall-mounted grab rail on the opposite side of the seat to the transfer space.
- There is a mirror.
- The mirror is not placed at a lower level or at an angle for ease of use.
- There is not a shelf next to the toilet.
- The toilet has a backrest and a cistern.
- The height of the toilet seat above floor level is 44cm (1ft 5in).
- There is a toilet roll holder.
- The toilet roll holder can be reached from seated on the toilet.
- The toilet roll holder is not placed higher than 100cm (3ft 3in).
- There is a wash basin.
- The wash basin can be reached from seated on the toilet.
- The wash basin is placed higher than 74cm (2ft 5in).
- The height of the wash basin is 79cm (2ft 7in).
- There is a vertical wall-mounted grab rail on the left hand side of the wash basin.
- The wash basin tap type is lever.
- There is a mixer tap.
- There is a soap dispenser.
- The soap dispenser can be reached from seated on the toilet.
- The height of the soap dispenser is 99cm.
- There is a towel dispenser.
- The towel dispenser cannot be reached from seated on the toilet.
- The towel dispenser is placed higher than 100cm (3ft 3in).
- The height of the towel dispenser is 115cm (3ft 9in).
- There is a hand dryer.
- The hand dryer cannot be reached from seated on the toilet.
- The hand dryer is placed higher than 100cm (3ft 3in).
- The height of the hand dryer is 112cm (3ft 8in).

Colour Contrast and Lighting

Collapse -

- The contrast between the external door and wall is good.
- The contrast between the internal door and wall is good.
- The contrast between the dropdown rail(s) and wall is poor.
- The contrast between the wall-mounted grab rail(s) and wall is poor.
- The toilet seat colour contrast is poor.
- The contrast between the walls and floor is good.
- The lighting levels are good.

- Standard toilet facilities are available.

Access to Standard Female Toilet(s) Collapse -

- The female toilet facilities that were surveyed are located in the front right hand corridor of the hotel, in the Banqueting Suite area.
- The female toilet(s) is/are approximately 19m (20yd 2ft) from the hotel entrance.
- There is step free access to the female toilet(s), via lift.
- There is pictorial signage on or near the toilet door.
- An ambulant toilet with wall-mounted grab rails is not available.
- The wash basin tap type is lever.
- There is not a flashing fire alarm beacon within the toilets.
- Lighting levels are good.
- There is a/are similar standard toilet(s) available.



Access to Standard Male Toilet(s) Collapse -

- The male toilet facilities that were surveyed are located in the front right hand corridor of the hotel, in the Banqueting Suite area.
- The male toilet(s) is/are approximately 26m (28yd 1ft) from the hotel entrance.
- There is step free access to the male toilet(s), via lift.
- There is pictorial signage on or near the toilet door.
- An ambulant toilet with wall-mounted grab rails is not available.
- The wash basin tap type is lever.
- There is not a flashing fire alarm beacon within the toilets.
- Lighting levels are good.
- There is a/are similar standard toilet(s) available.

Who we are...

- Homepage
- About Us
- Access Icons
- FAQs
- Contact Us
- Press and Media

The way we work...

- Website Conditions
- Acceptable Use Policy
- Cookie Policy
- Privacy Policy
- Accessibility Policy
- Common Access Guide Terms Explained

Our support for business

- Disabled Charities and Useful Links
- FAQs Around Our Surveyors

Follow @DisabledGo

Join us...

- Facebook
- Twitter
- Google+
- Switch to mobile site



eCommerce Solutions by PureNet